

Tusk Pannier Rack

Part Number: 1882990012

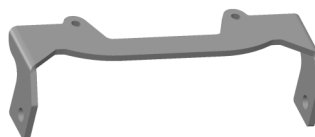
2016+ Royal Enfield Himalayan



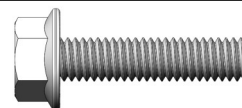
Thank you for purchasing the Tusk Pannier Rack. Please take note of the information and instructions below to get the most out of your Tusk product.

Hardware:

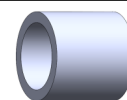
- (1) Left Pannier
- (1) Right Pannier
- (1) Rear Fender Bracket
- (1) Rear Brace
- (2) M6 x 1 x 25mm Hex Flange Bolt
- (4) M6 x 1 x 20mm Hex Flange Bolt
- (5) M8 x 1.25 x 20mm Hex Flange Bolt
- (2) 6mm Spacer
- (4) M6 Nyloc Nut
- (3) M8 Nyloc Nut



(1) Rear Fender Bracket



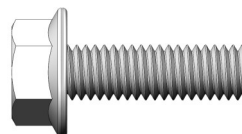
(2) M6 x 1 x 25mm Hex Flange Bolt



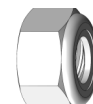
(2) 6mm Spacer



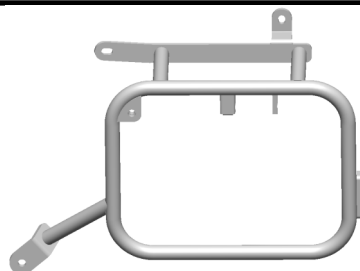
(1) Rear Brace



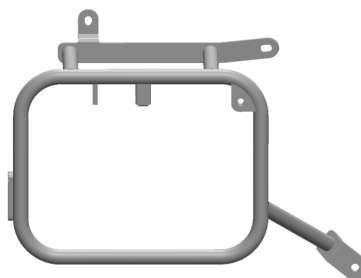
(4) M6 x 1 x 20mm Hex Flange Bolt



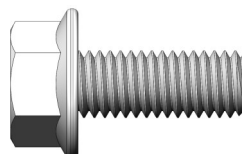
(4) M6 Nyloc Nut



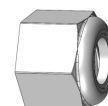
(1) Left Pannier



(1) Right Pannier



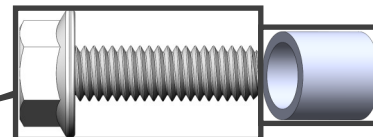
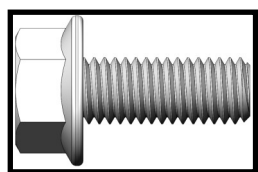
(5) M8 x 1.25 x 20mm Hex Flange Bolt



(3) M8 Nyloc Nut

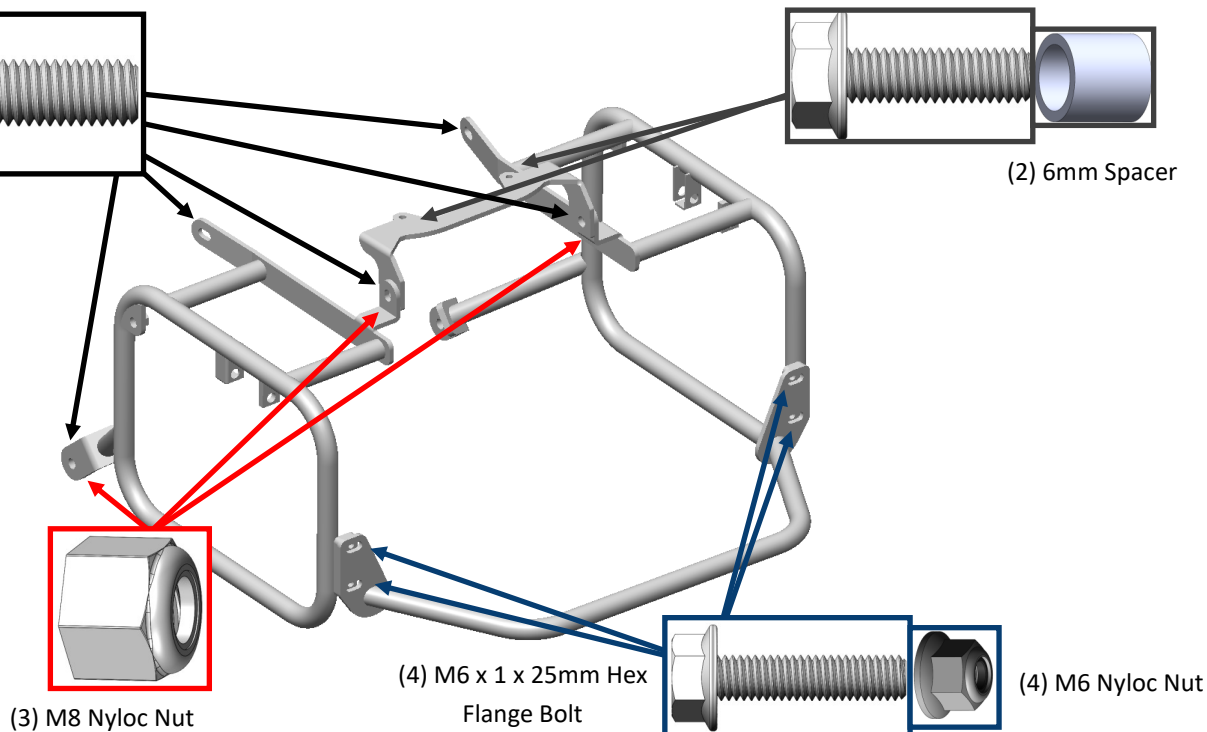
(5) M8 x 1.25 x 20mm Hex Flange Bolt

(2) M6 x 1 x 20mm Hex Flange Bolt



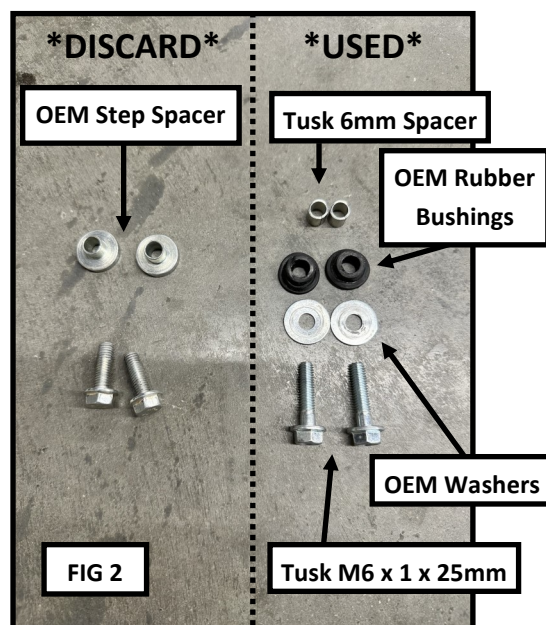
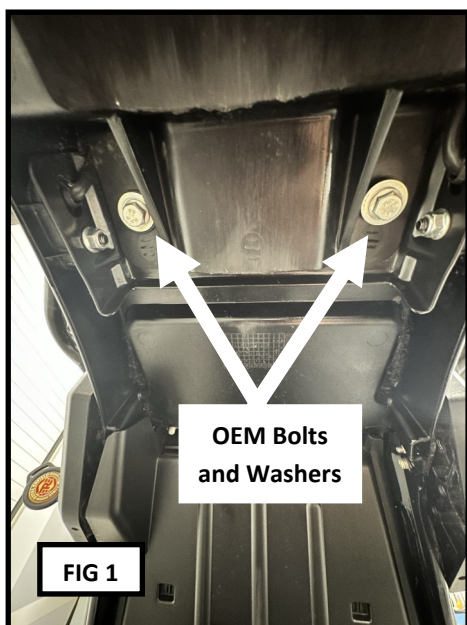
(2) 6mm Spacer

Exploded View:



Rear Fender Bracket Installation:

1. Remove the rear seat.
2. Following **(FIG 1)**, unscrew the two bolts connecting the rear fender to the bike (located on the bottom side of the fender). Keep the OEM Washers to be used in future steps.
3. Remove the two metal OEM Step Spacers located between the frame and on top of the fender. Leave the rubber bushings inserted into the fender.

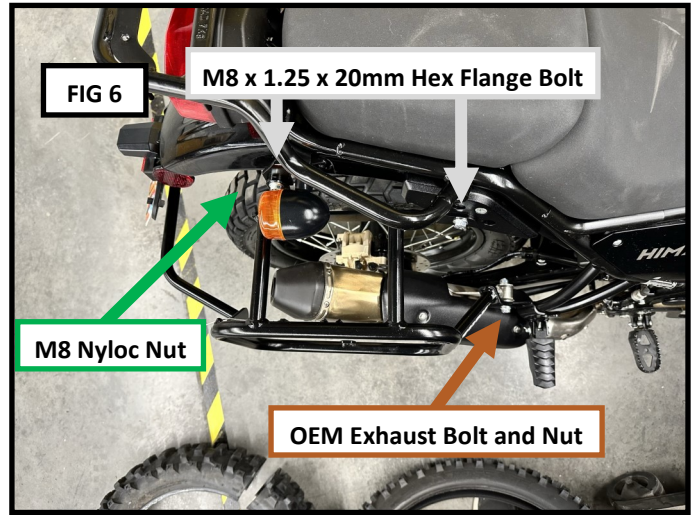
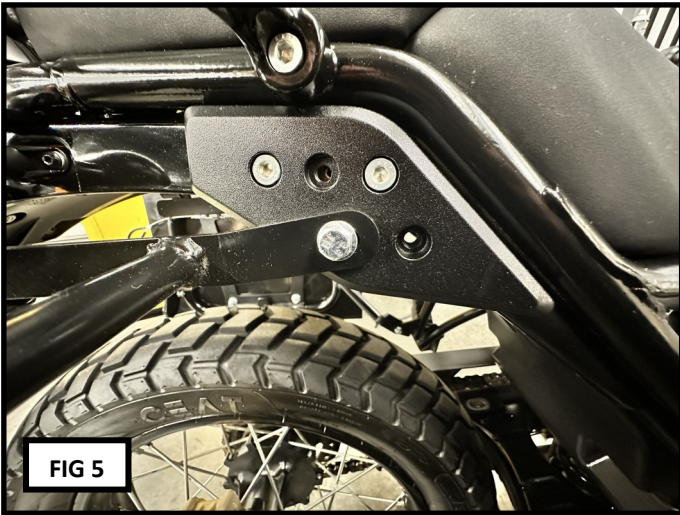


4. Insert one supplied **6mm Spacer** into each of the rubber bushings in the fender. **FIG 2, 3**
5. Place each **M6 x 25mm Hex Flange Bolt** through the OEM Washer, rear fender, rubber bushing, **6mm Spacer**, **Tusk Rear Mount Bracket**. Fully tighten into the frame of the bike. **FIG 2, 3, 4**



RH Pannier Rack Installation:

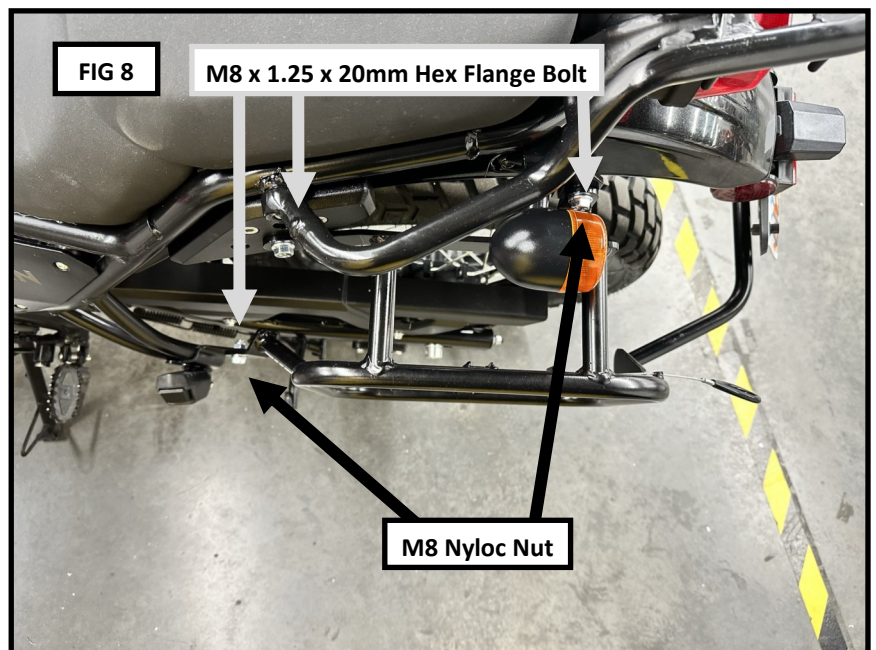
7. Remove the OEM Exhaust Bolt and Nut.
8. Following **(FIG 5,6)** Locate and install the **RH Pannier** and the corresponding hardware onto the bike. Use **(2) M8 x 1.25 x 20mm Hex Flange Bolt**, **(1) M8 Nyloc Nut**, and the OEM Exhaust Bolt & Nut. Leave these bolts loose for final adjustment at the end of installation



LH Pannier Rack Installation:

****Similar to the RH, with the exception of the exhaust bolt.****

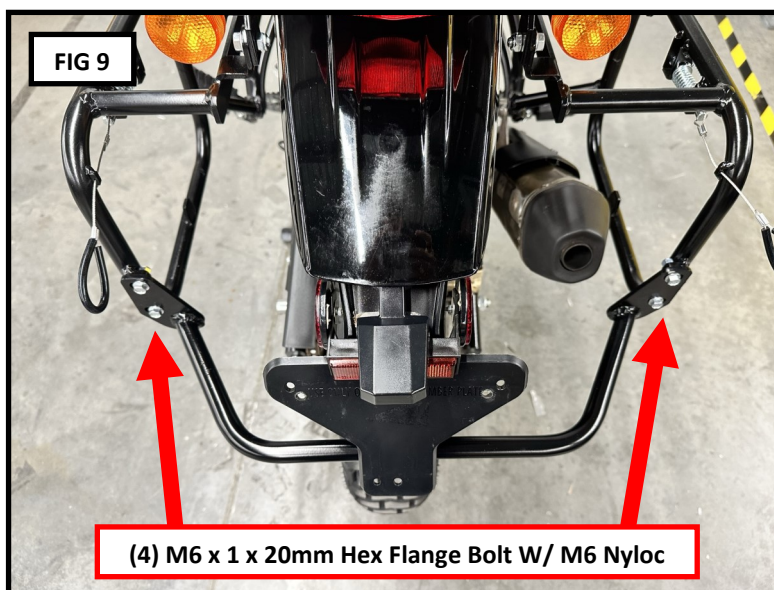
7. Following **(FIG 7,8)** locate and install the **LH Pannier** and the corresponding hardware onto the bike. Use **(3) M8 x 1.25 x 20mm Hex Flange Bolt**, **(2) M8 Nyloc Nut**. Leave these bolts loose for final adjustment at the end of installation.



Rear Brace Installation:

8. Follow (FIG 9) to install the **Rear Brace** with its corresponding hardware. **(4) M6 x 20mm Hex Flange Bolt**, **(4) M6 Nyloc Nut**. Leave these bolts loose for final adjustment at the end of installation.

****Note: If the license plate has been relocated, the rear fender brace may be installed upside down for more clearance.****

**Pannier Rack Final Alignment and Tightening:**

9. Tighten all bolts for the **Pannier Rack**.

****Alignment is easiest when tightened at the Rear Fender Bracket first, then the mount just below the passenger foot peg. Tightening these two points first makes it easier to align all of the other mounting points on the machine.****



Enjoy the use of your new Tusk Pannier Racks!

Tusk Pannier Boxes

Pannier Mounting

Note: Most universal type pannier boxes can be mounted to the tusk pannier racks. Always refer to the instructions included with the boxes you are mounting.

1. Install the mounting plates to both the left and right side of the pannier racks (pull the pull-pins back and make sure they engage correctly into the mounting plate).

2. With the mounting plates in their proper position, hold up the panniers to the bike to find the optimal position for rider comfort and look. It is a good idea to have a friend hold one side up at a time while you sit on the bike to make sure you are comfortable with the position.

Note: When positioning the pannier, keep the passenger's leg, foot, and passenger peg in mind if you ever plan on having a passenger).

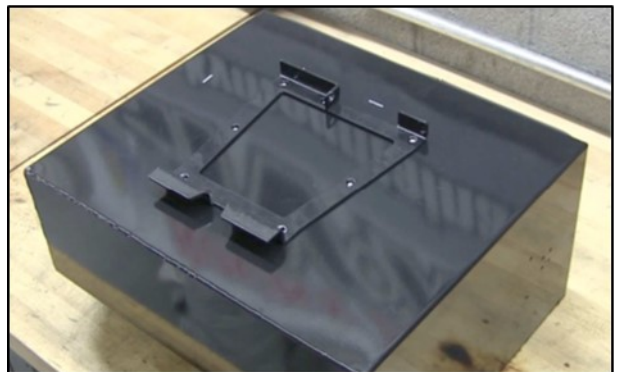
3. Once the optimal position is found, mark the location of the 7 mounting holes that will be required (this is best done while your buddy holds the box in place and you mark the holes with a marker).

4. Carefully set your box down with the backside up. Remove the mounting plate and set it on the box to make certain your marks are aligned correctly (Measure twice, drill once!). Drill the holes just big enough to fit the 8mm mounting bolts (11/32" bit).

5. Drill one pannier at a time. Once the first pannier is drilled, you may be able to use it as a template for the other side. Put the 2 pannier boxes back to back with the lids removed. Mark the pannier that hasn't been drilled through using the holes in the drilled pannier. Again, using the correct mounting plate, double check the marks. Once the drill marks are correct with the mounting plate, confirm fitment to the bike and drill the holes.

6. Bolt the mounting plates to the panniers using the button head allen bolts. Make sure the internal box support bar is used (flat bar) on the top 3 mount bolts (M8 x 20mm). Washers will be used on the other mount bolts (M8 x 25mm). The bolt will go in through the mount plate, into the box, through the internal mount bar, and into the nuts on the top 3 bolts. The bolts will go in from the inside of the box on the lower bolts, the nut will rest outside on the mounting plate.

Note: *The internal box support is critical for this pannier rack system. If not used, the weight of the box and gear will bend the mount plate and can lead to further rack damage and failure.*



Tusk Pannier Boxes

Pannier Mounting (Continued...)

Adjustment

7. With the mount plates mounted to the box, put the box on the rack. Check the tightness of the mount plate on the rack tubing. Check the alignment of the pull pin with the hole on the mount plate. If necessary, use washers to space the mount plate from the box (very likely on stiff aluminum panniers). Once adjusted with spacers, if minor adjustment for the pull-pin to fit properly in the mount plate hole is needed, a round file may be used.

Caution: Make sure the pull pin drops completely into the hole on the mount plate every time you mount your panniers (Wiggle the panniers to help seat). If not checked and the pin didn't seat correctly, the pannier could fall off. Keep the pin lubricated to aid in movement and engagement.

Locking security knobs

The pannier racks come complete with optional locking knobs that can be used with your panniers. This locking knob is an 8mm bolt with a plastic handle. Its purpose is to bolt the pannier box to the actual rack; so if the lids of the boxes are locked, the boxes will not be able to be removed from the motorcycle. The intent is to prevent theft as well as provide addition security to the box mounting.

8. Mark the location for the hole used for the security knob: Install the provided 8mm x 30mm marking bolt into the threaded hole on the front top corner of the rack. Put the pannier on the bike and put weight on the pannier to make sure it is seated correctly in place. The head of the marking bolt will hit your pannier box. Use a small mallet and tap on the inside of the box where the marking bolt hits the box. This will leave a mark in the box in the location you will drill.

9. Once the Box is marked in the exact location of the threaded hole on the rack, remove the box and drill the hole for the 8mm knob bolt (3/8" drill bit). Remove the marking bolt from the pannier rack.

10. Once drilled, mount the pannier box to the rack. Thread the security knob through the box and into the threads on the rack. Use the 8mm externally serrated washers on the knobs to prevent them from vibrating loose.

Caution: Before each of your adventures, check the pannier rack and boxes to ensure hardware is properly tightened. Always make sure the boxes are securely attached to the locking pins. It is highly advised that the security knobs always be used for increased security and safety. Enjoy your adventures!

